

University of the South Pacific

Solomon Islands People First Network

Rural Development Volunteers Association

UNDP Multi-country Office, Suva, Fiji

**Joint Research Project in to the Social and Economic Impacts
and Appropriation of Rural ICT in Solomon Islands**

Oct 2003 - June 2004

PRELIMINARY USAGE DATA

David Leeming, Technical Advisor, PFnet, Solomon Islands
Mariselo Asupemane, Webmaster, PFnet
GIS census data contributed by Gilmour Pio

Usage Data - sources

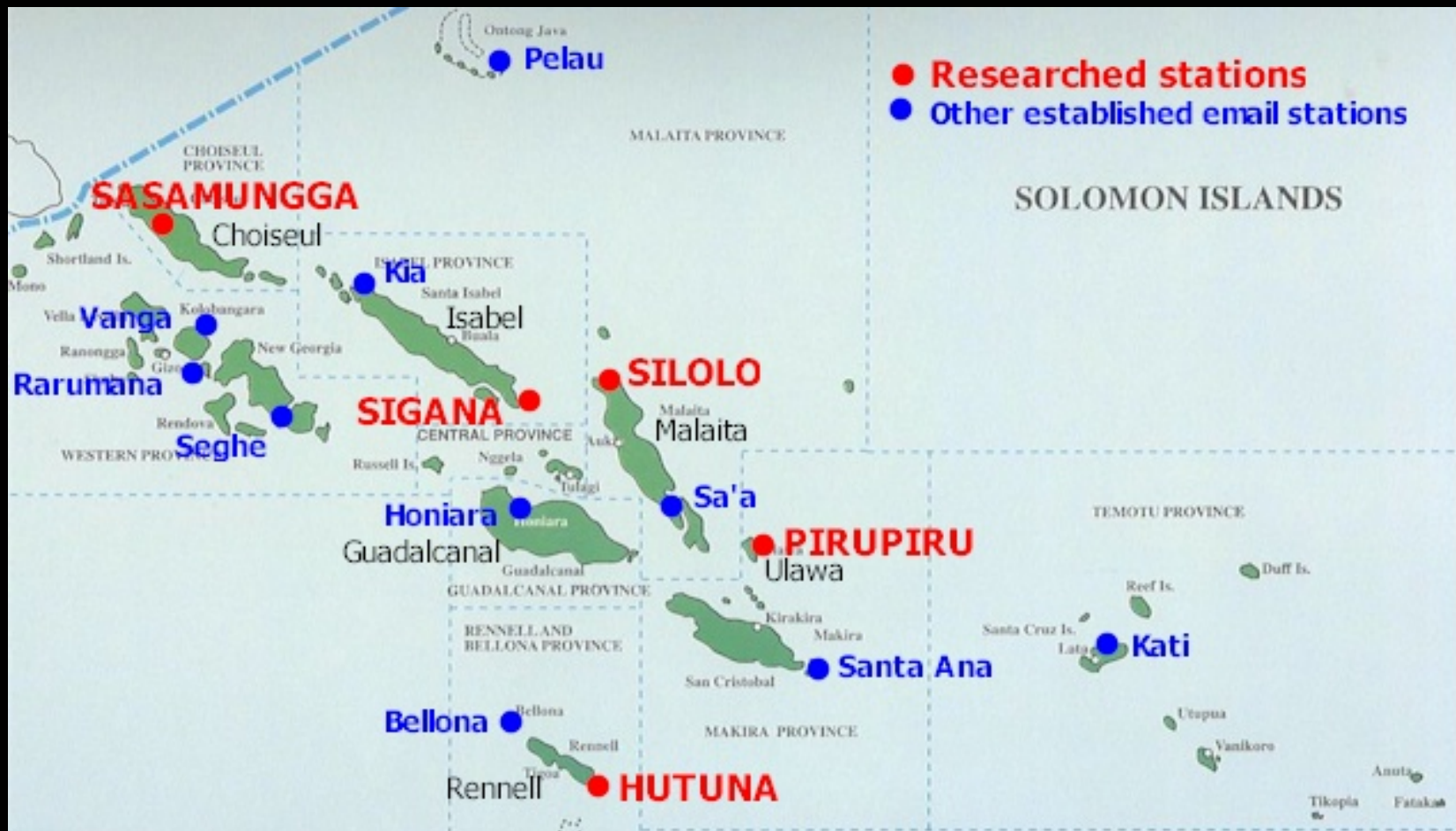
- User Logs

Unique-user data collected over 8-week period coinciding with research

- PFnet monitoring data

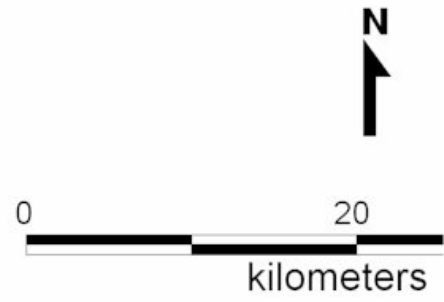
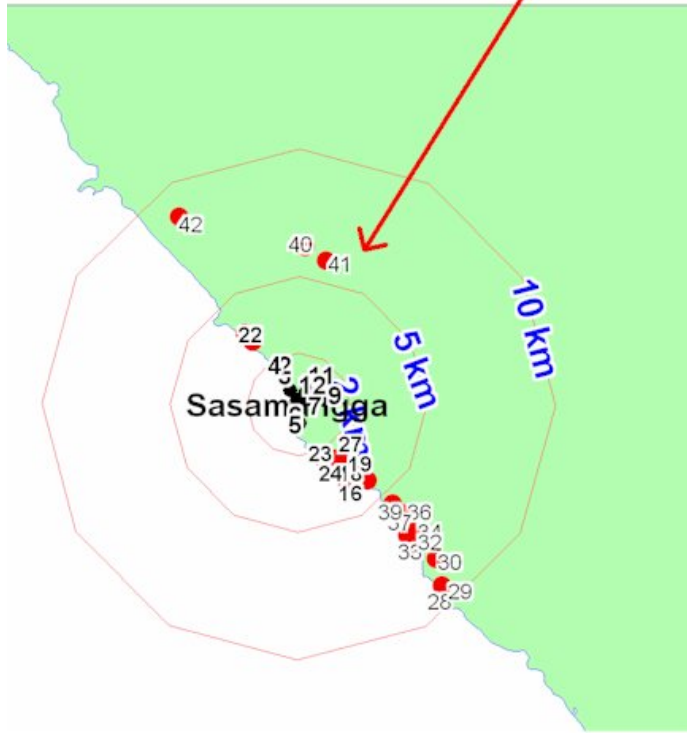
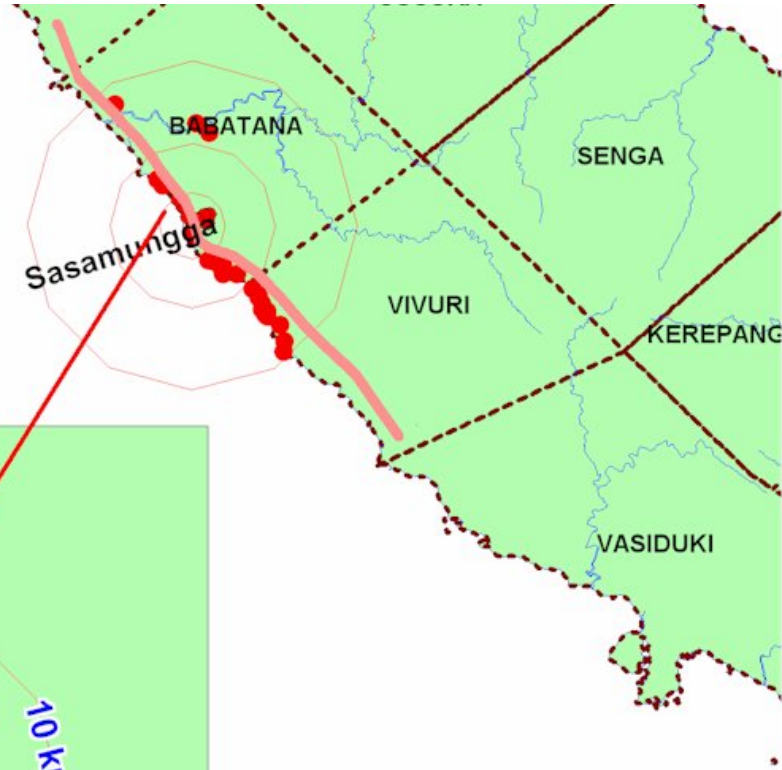
User profile data from PFnet daily reporting system over 15 months

The PFnet email network



USER LOG DATA

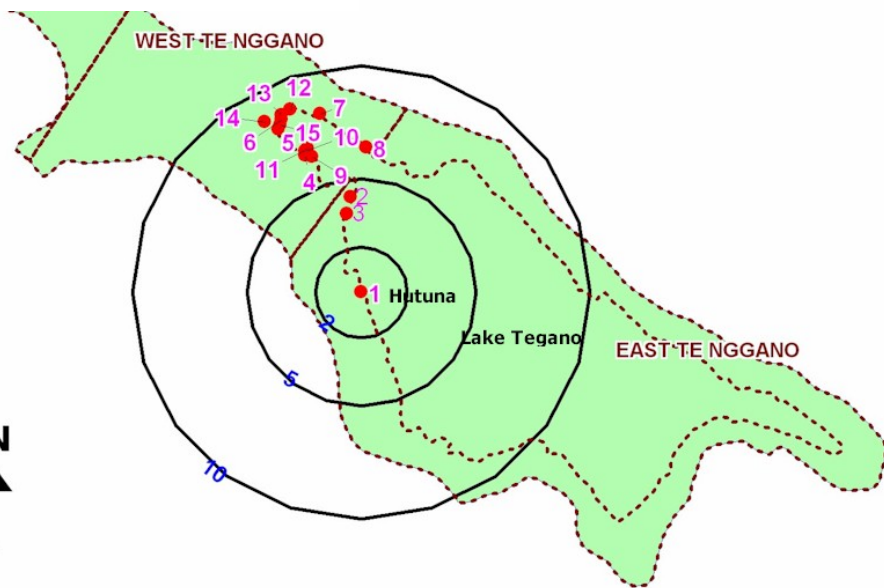
- Records of individual users and their tally of uses were kept at each station for 8 weeks
- The logs recorded the gender and home village of the users
- This data tells us the number of unique users, the distribution of the user base and the gender distribution



Sasamungga

User log summary – Sasamungga

	Total	Male	Female	Users living within certain distances (km)from email station			
				<2	2-5	5-10	>10
Number of unique users	121	83 (69%)	38 (31%)	81 (67%)	27 (23%)	10 (8%)	3 (2%)
Unique transactions	394	287 (73%)	107 (27%)	271 (69%)	91 (23%)	23 (6%)	9 (2%)
% of population who are users				11%	6%	3%	
Number of users/family				0.71	0.36	0.18	



Hutuna

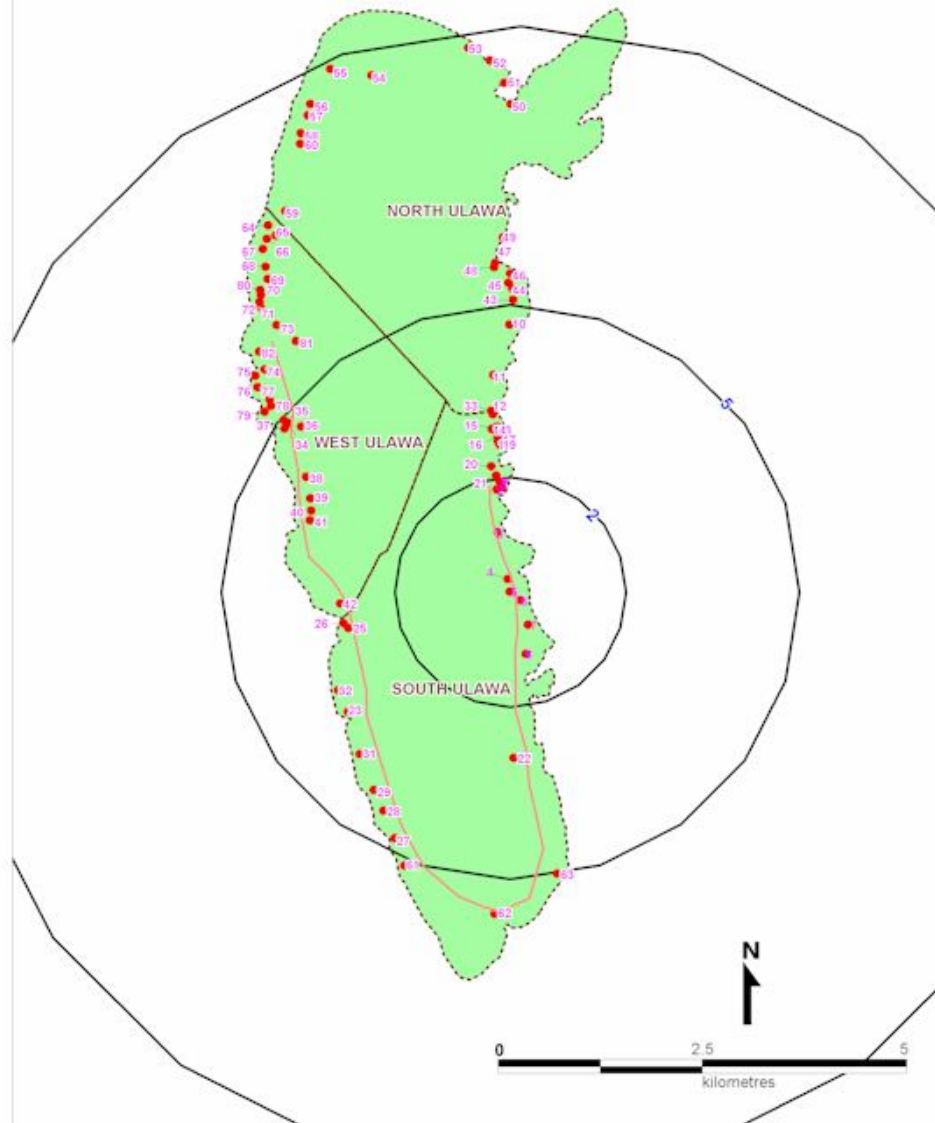


User log summary – Hutuna

				Users living within certain distances (km)from email station		
	Total	Male	Female	<2	2-10	>10
Individual users	89	52 (58%)	37 (42%)	56 (63%)	22 (25%)	11 (12%)
Unique transactions	329	202 (61%)	127 (39%)	245 (75%)	66 (20%)	18 (5%)
% of population who are users				26%	4%	0.5%
Number of users/family				1.2	0.14	0.02

PIRUPIRU EMAIL STATION SURVEY

Makira/Ulawa Province

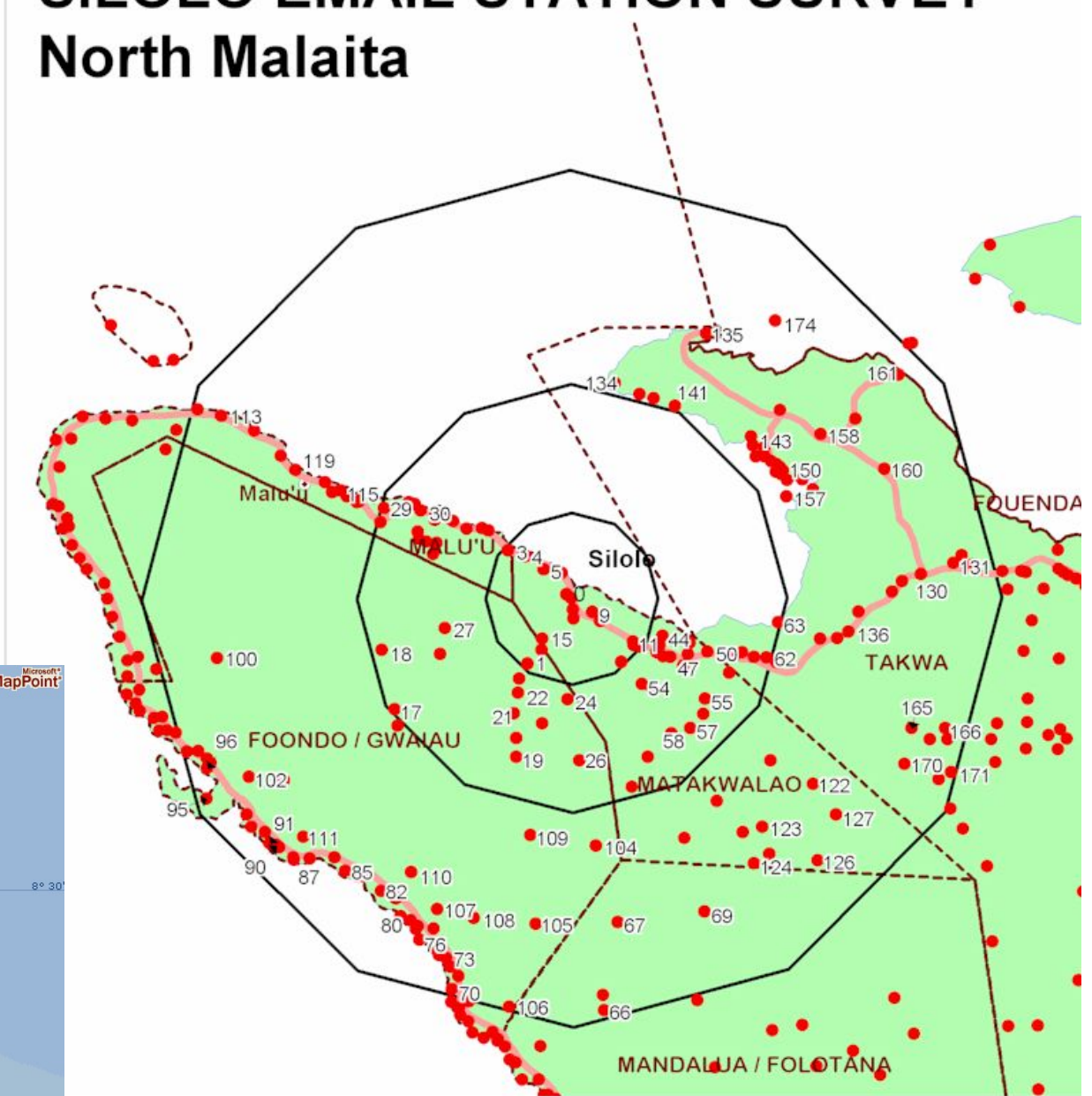


User log summary – Pirupiru

				Users living within certain distances (km)from email station			
	TOTAL	Male	Female	<2	2-5	5-10	>10km
Individual users	107	70 (65%)	37 (35%)	35 (33%)	31 (30%)	10 (9%)	31 (30%)
Unique transactions	225	166 (74%)	59 (26%)	113 (50%)	54 (24%)	11 (5%)	47 (21%)
% of population who are users				11%	7%	2%	2%
Number of users/family				0.57	0.35	0.09	0.10

SILOLO EMAIL STATION SURVEY

North Malaita

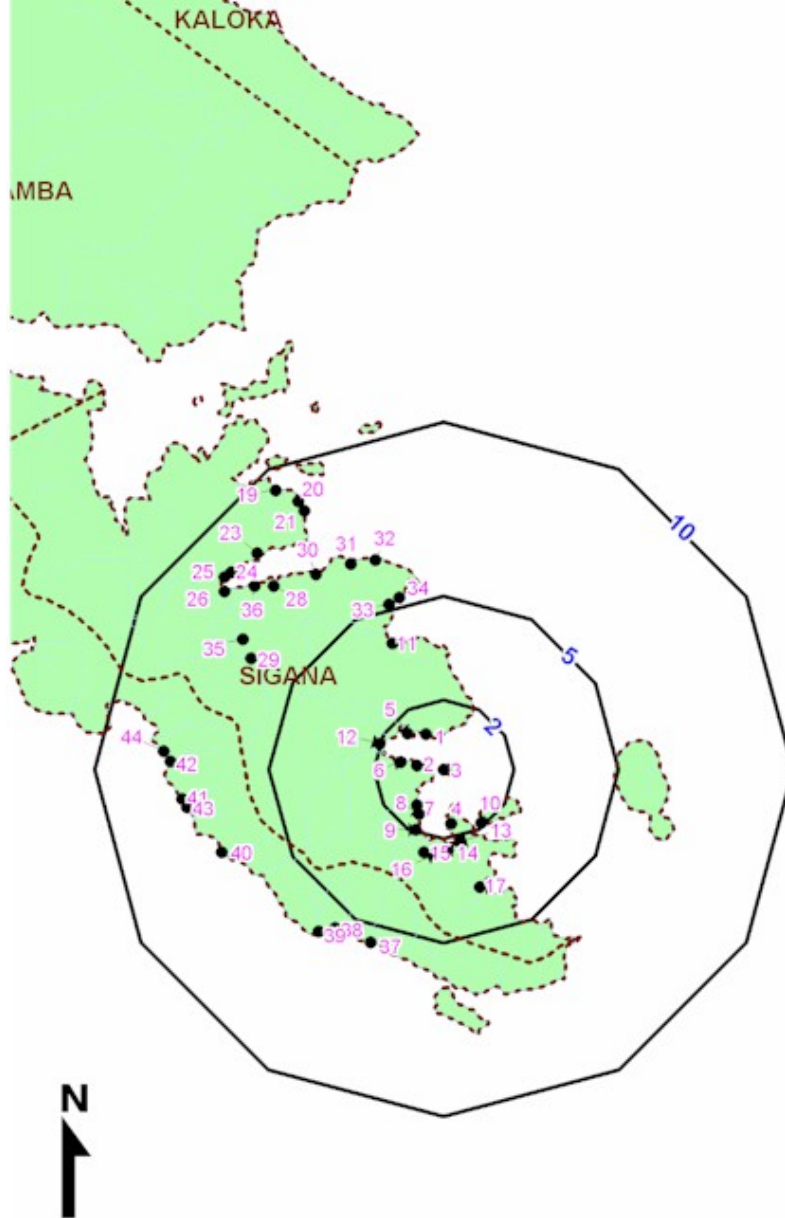


User log summary – Silolo

				Users living within certain distances (km)from email station			
	Total	Male	Female	<2km	2-5	5-10	>10
Individual users	79	64 (81%)	15 (19%)	14 (17%)	38 (48%)	22 (28%)	5 (6%)
Unique transactions	202	145 (72%)	57 (28%)	57 (28%)	91 (45%)	49 (24%)	5 (2%)
% of population who are users				4%	2%	0.4	
Number of users/family				0.2	0.11	0.02	

SIGANA EMAIL STATION SURVEY

Isabel Province



User log summary – Sigana

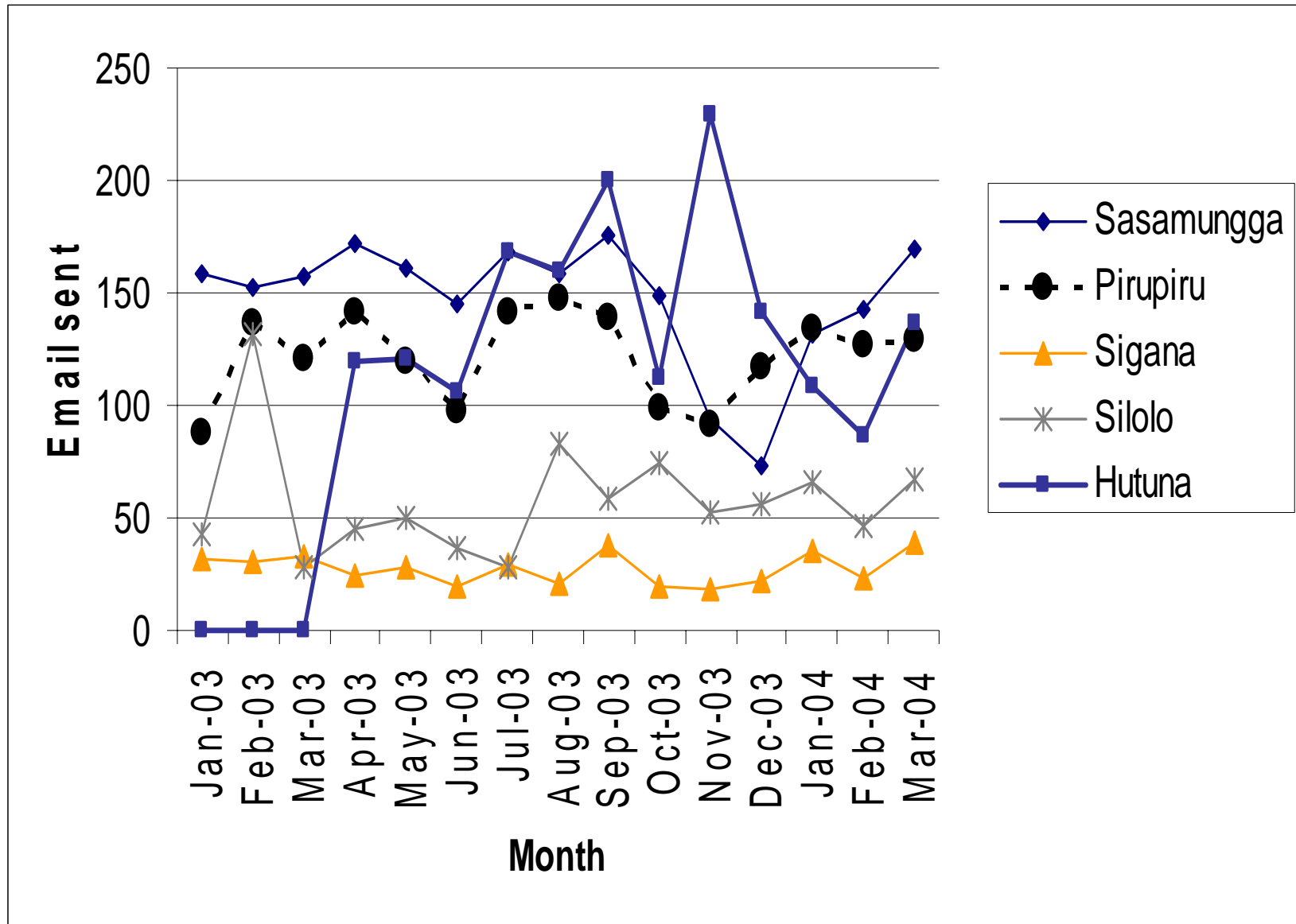
				Users living within certain distances from email station		
	Total	Male	Female	<2	2-5	5-10
Individual users	43	36 (84%)	7 (16%)	28 (65%)	6 (14%)	9 (21%)
Unique transactions	109	98 (90%)	11 (10%)	59 (54%)	23 (21%)	27 (25%)
% of population who are users				6%	4%	1%
Number of users/family				0.29	0.22	0.05

Daily monitoring data

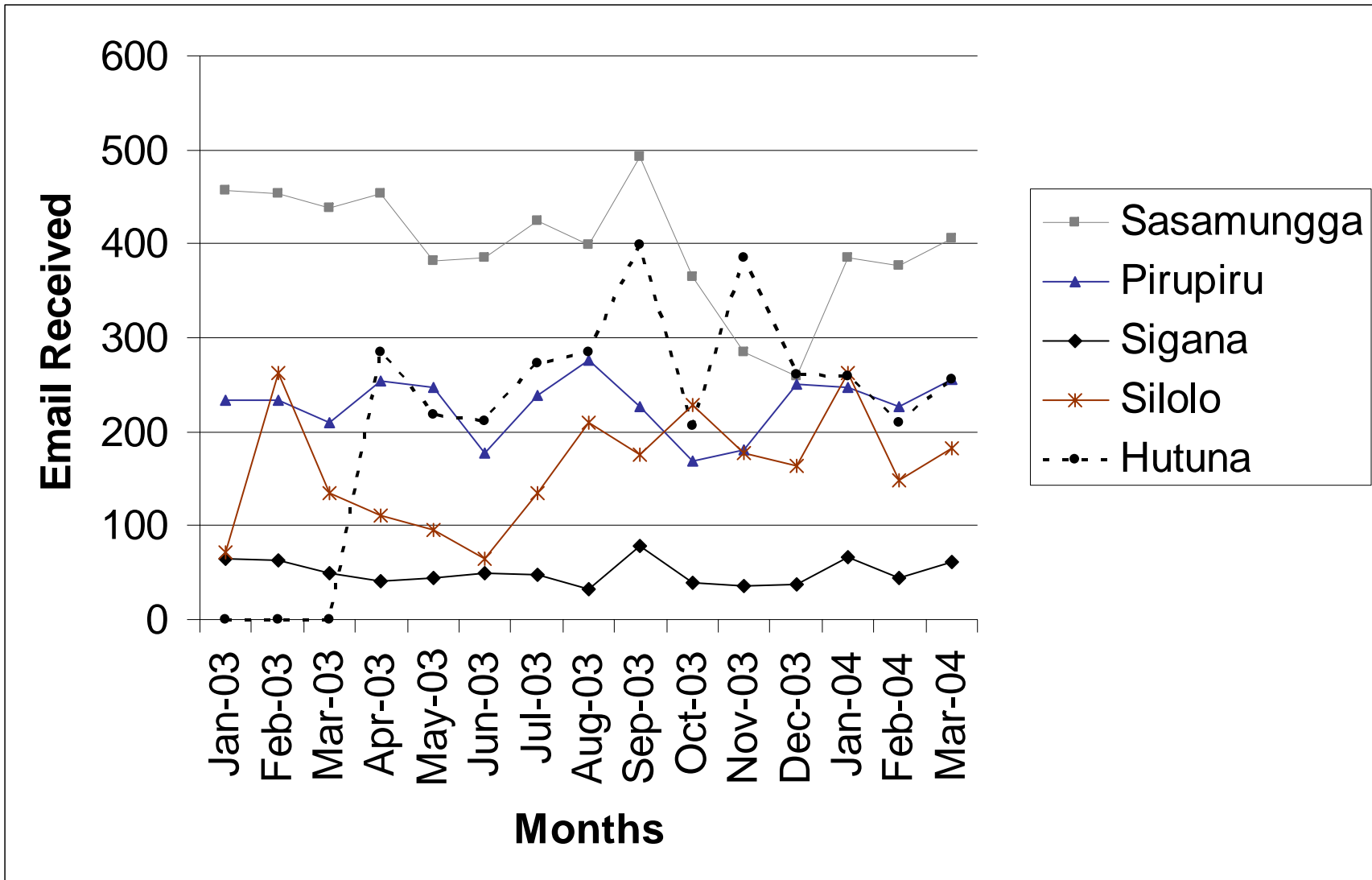
- From the daily reports sent by each station to PFnet HQ
- Records user profiles (not unique users) and usage patterns, also financial data
- Based on the emails sent from each station's shared (community) account
- Started January 2003

Full data for all stations is kept updated on the PFnet website

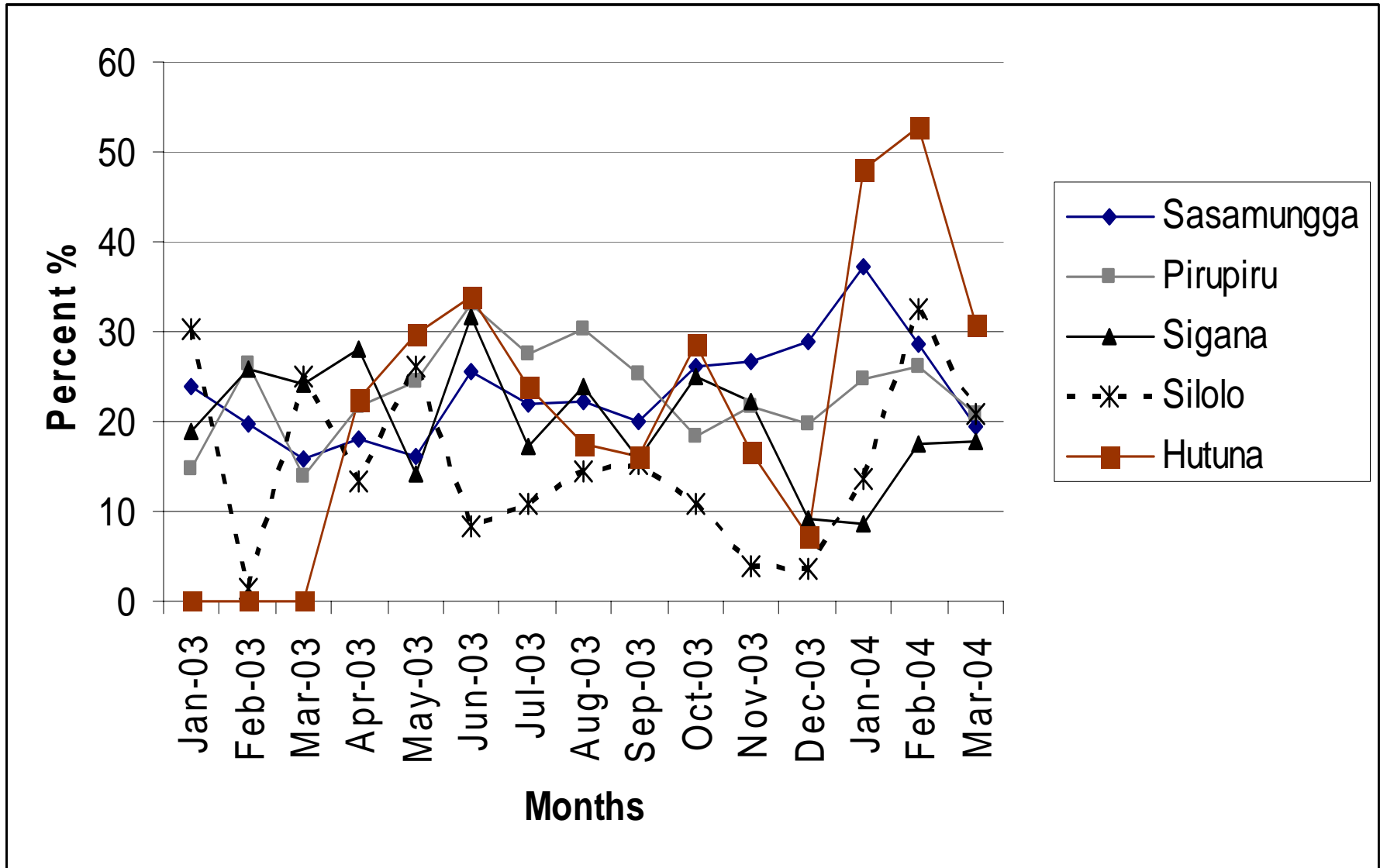
TRAFFIC: Email sent from each station per month



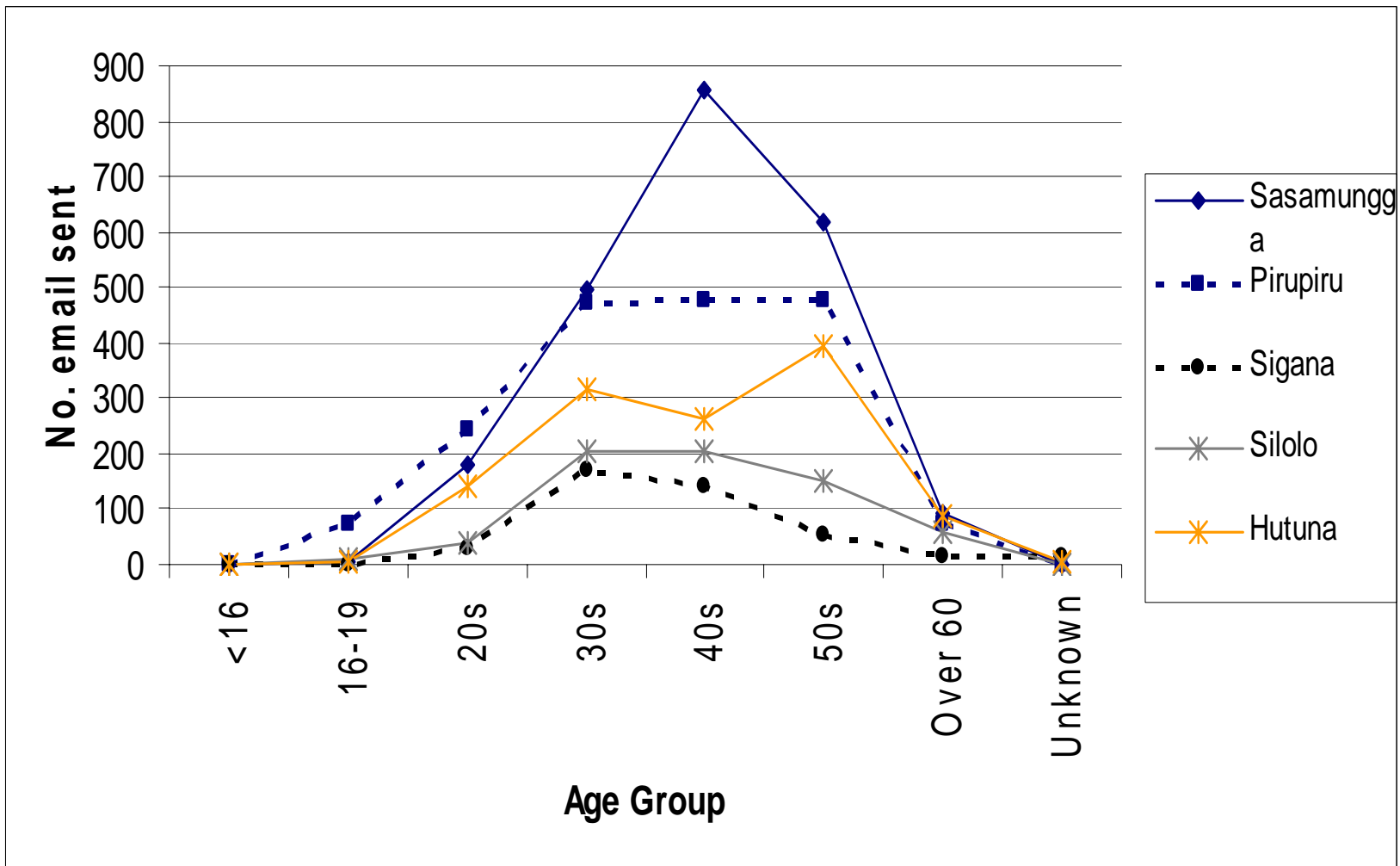
TRAFFIC: Email received by each station per month



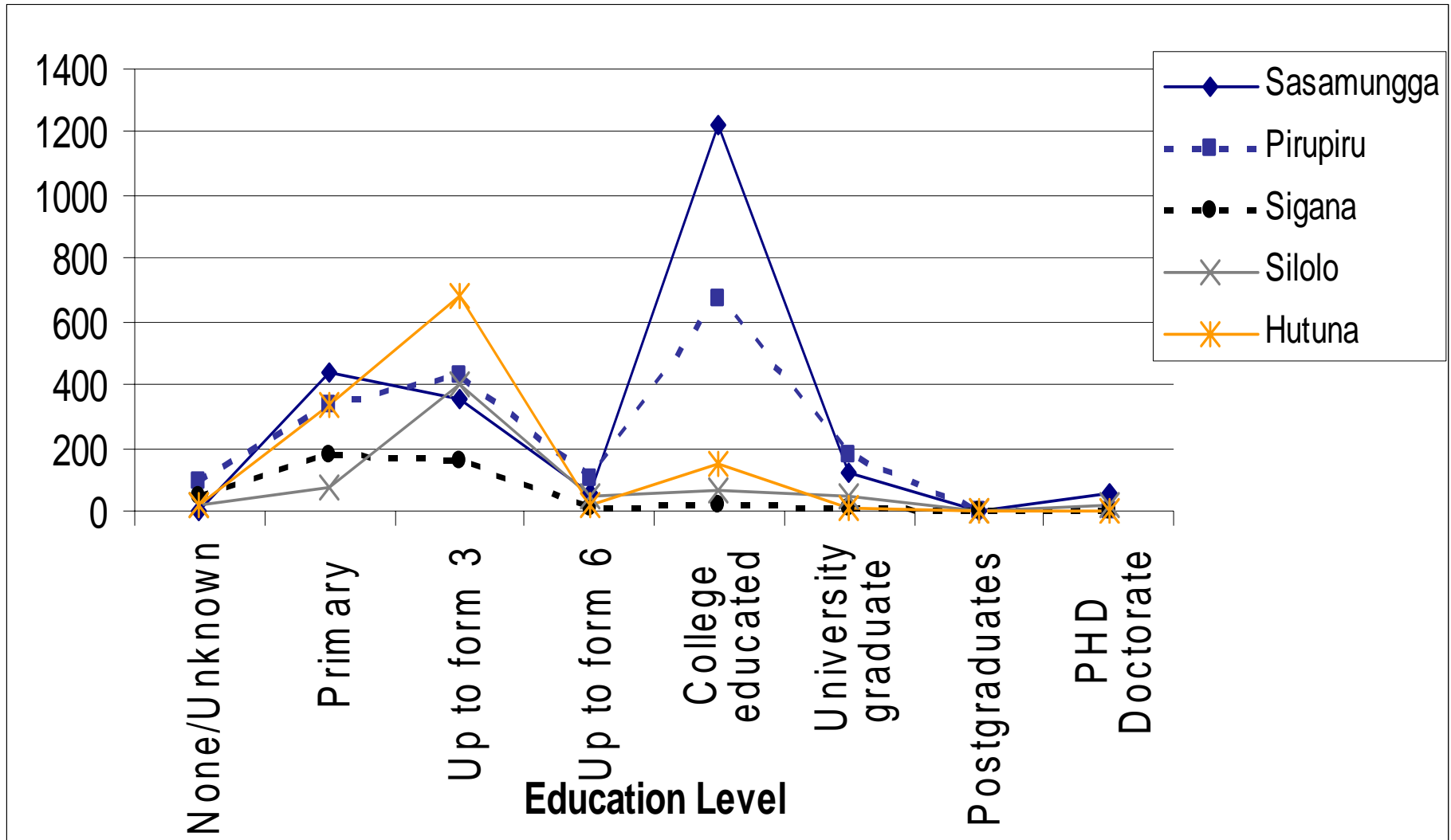
GENDER: % of email sent by women per month



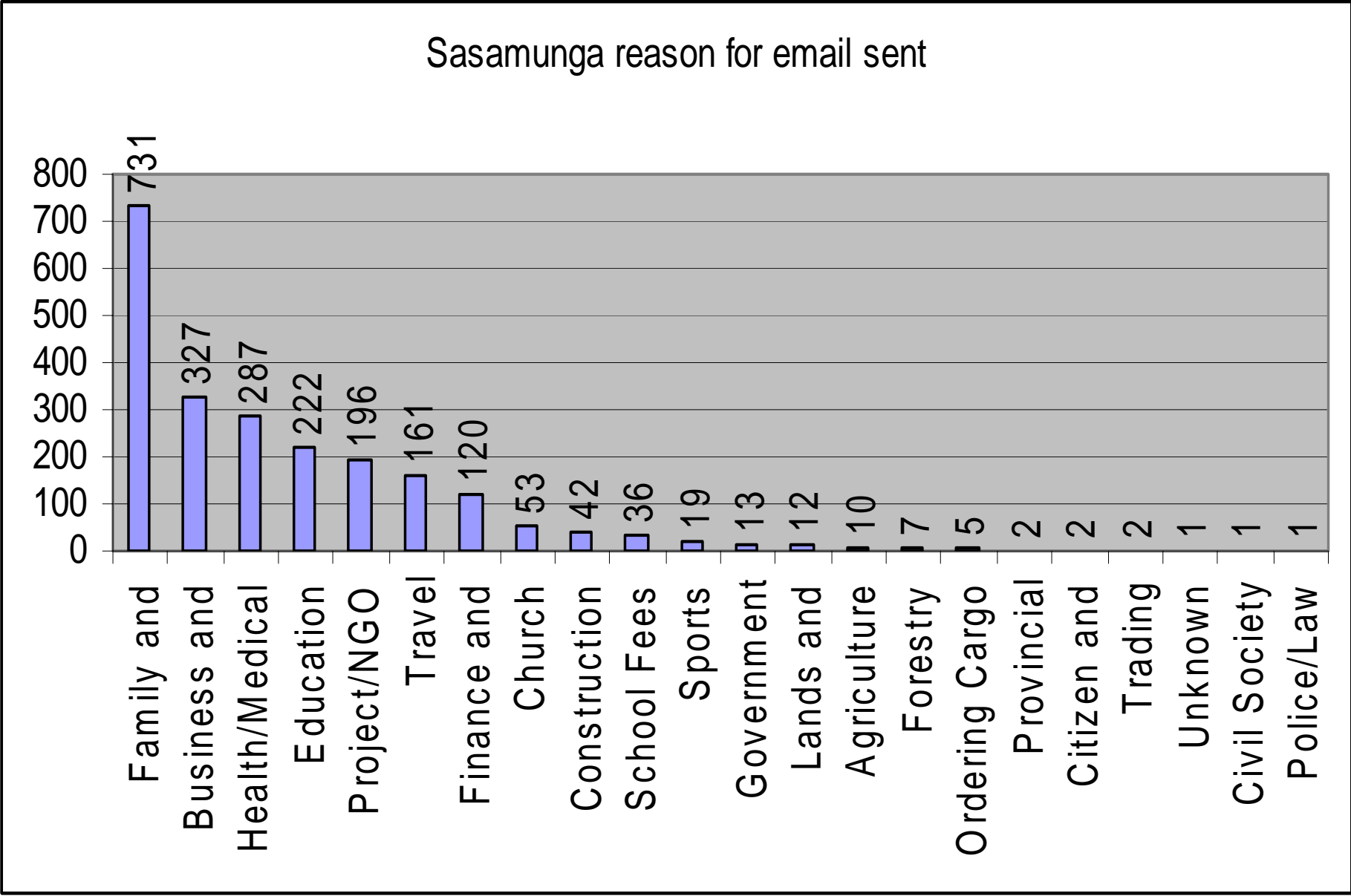
AGE: Email sent by different age groups per month



EDUCATION : Education level of email senders



Reasons why people send email – Sasamungga (example)



Destination of email – Hutuna (example)

