

Rev.	Date	Revision Notes	By
D	29.05.18	AS UPDATED BY S.NAND	Jt
C	19.01.18	AS UPDATED BY S.NAND	EJ
B	03.06.16	AS BUILT BY KRAMMER	
A	28.04.16	AS BUILT BY KRAMMER	

Rev.	Date	Revision Notes	By
D	29.05.18	AS UPDATED BY S.NAND	Jt
C	19.01.18	AS UPDATED BY S.NAND	EJ
B	03.06.16	AS BUILT BY KRAMMER	
A	28.04.16	AS BUILT BY KRAMMER	

Dimensions  
Figured dimensions shall take precedence over scaled dimensions and larger scale drawings over smaller scale drawings

Check on Site  
Check all dimensions on site before commencing work and before producing shop drawings. Notify the architect of any discrepancies

PROJECT:  
**LAUCALA CAMPUS SERVICES AS-BUILTS DRAWINGS**  
UNIVERSITY OF THE SOUTH PACIFIC  
MIDDLE & MARINE CAMPUSES

DRAWING TITLE:  
**HYDRAULICS SERVICES - SEWER & STORM WATER LAYOUT**

DRAWING STATUS:  
**FOR TENDER**

Issue Date: **May 2018** Drawn: **EJ**

Project Design: Checked By: **SN/JT**

Project Number: **16091F**

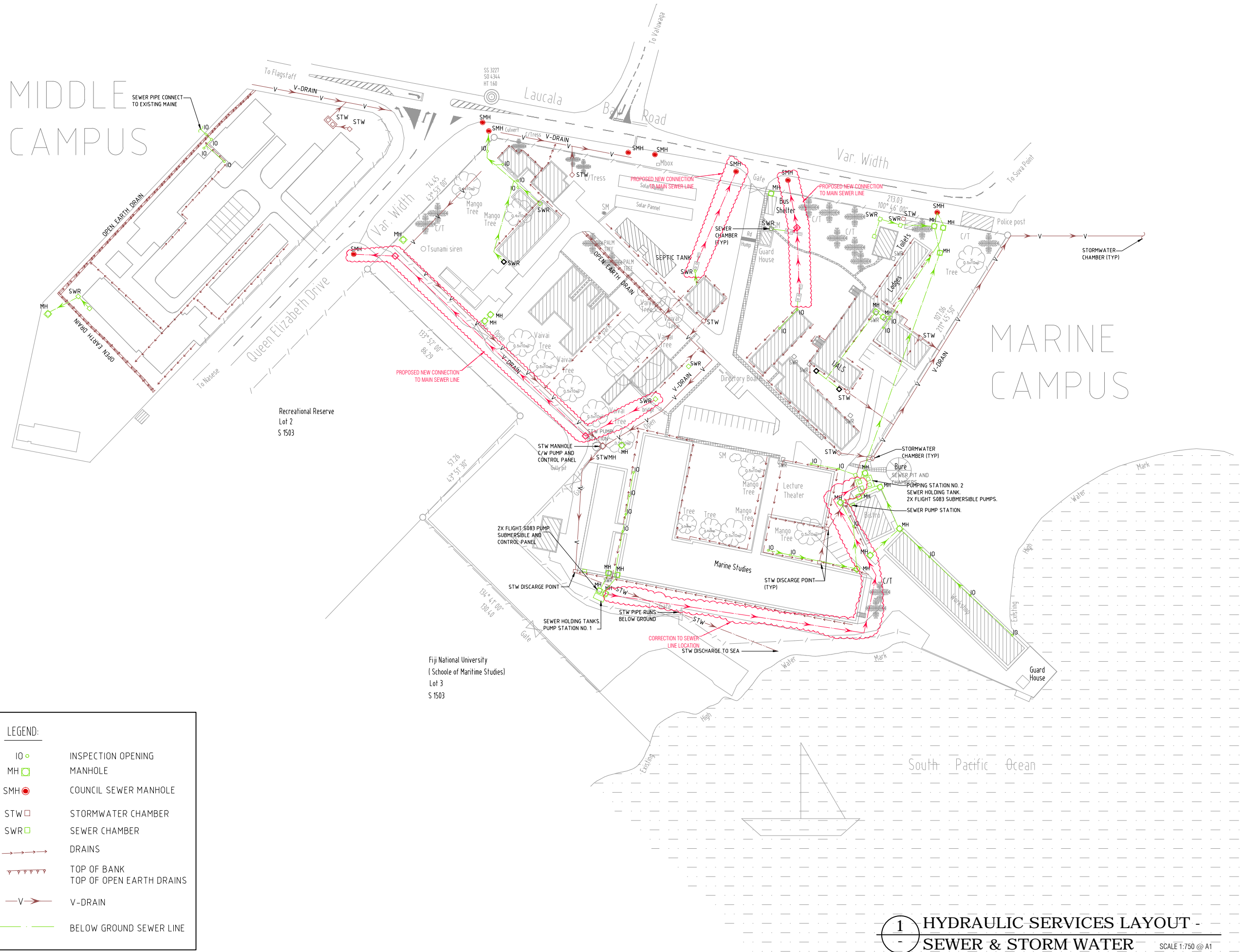
DRAWING NUMBER: **H02** REVISION: **D**

MIDDLE CAMPUS

MARINE CAMPUS

LEGEND:	
IO	INSPECTION OPENING
MH	MANHOLE
SMH	COUNCIL SEWER MANHOLE
STW	STORMWATER CHAMBER
SWR	SEWER CHAMBER
→→→	DRAINS
▽▽▽	TOP OF BANK TOP OF OPEN EARTH DRAINS
→-V	V-DRAIN
---	BELOW GROUND SEWER LINE

**1 HYDRAULIC SERVICES LAYOUT - SEWER & STORM WATER** SCALE 1:750 @ A1



Fiji National University  
(School of Maritime Studies)  
Lot 3  
S 1503

Recreational Reserve  
Lot 2  
S 1503