

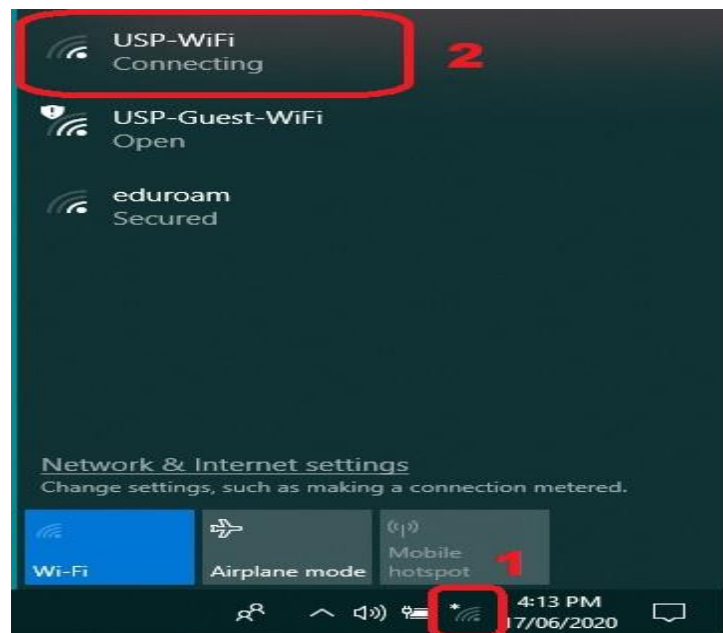
Welcome to The University of the South Pacific

This is a guide for users of Windows Computers

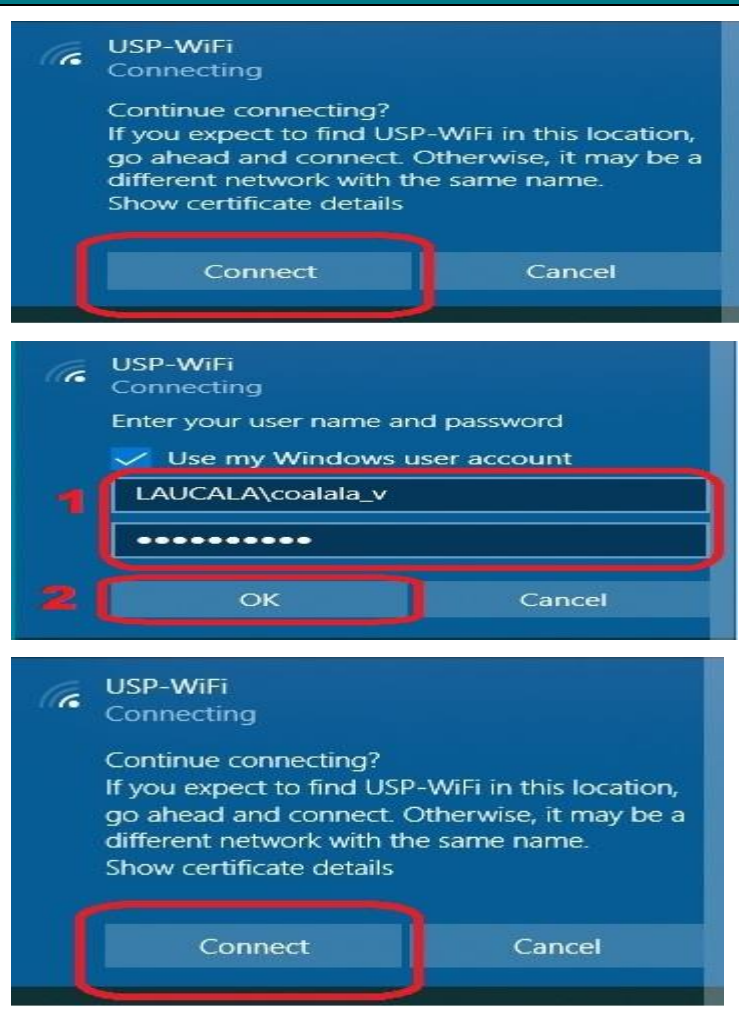
Before you connect, some Important information for you to know:

1. Allowed OS versions: Windows 8 and above
2. Recommended anti-virus options are listed:
 - a. Avira
 - b. Avast
 - c. Bitdefender
 - d. Bullguard
 - e. Immundet
 - f. ESet
 - g. Kaspersky
 - h. McAfee
 - i. Symantec Norton

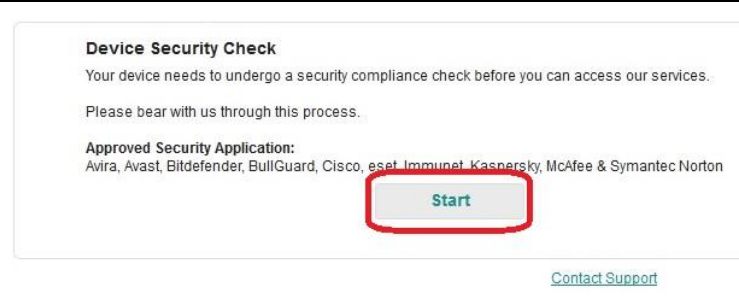
- 1st click on **Wi-Fi** icon
- 2nd select the **USP-WiFi** signal to connect



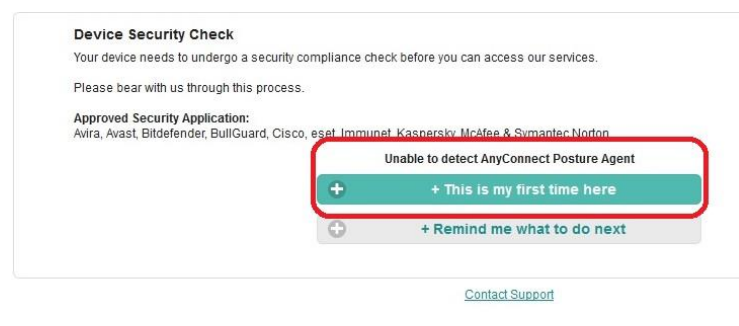
- Clicking on **“Connect”** will allow you to continue.
- Credentials entered for user verification.
Eg.) Student: student\s11111111
Staff: laucala\coalala_v
- Clicking **“Connect”** again gets you through this credentials checks



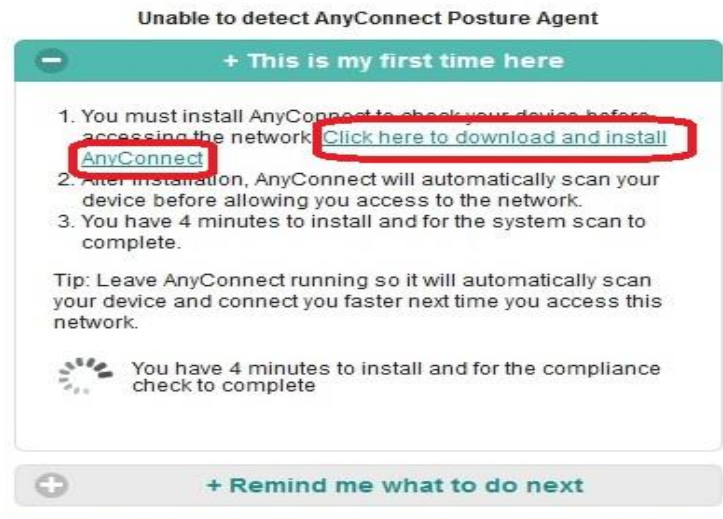
Click on **“Start”** so that the progress of scanning your device begins



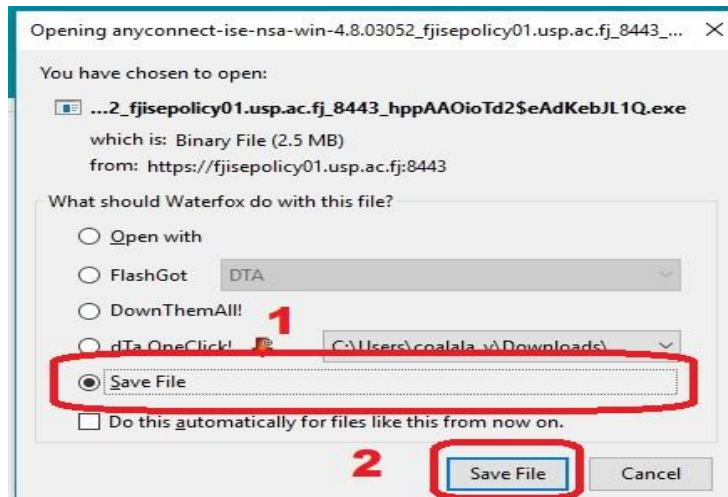
Click on the Option:
“This is my first time here”
This will start the download of an agent to scan your device for compliance



Clicking on the hyperlink;
“Click here to download and install AnyConnect”



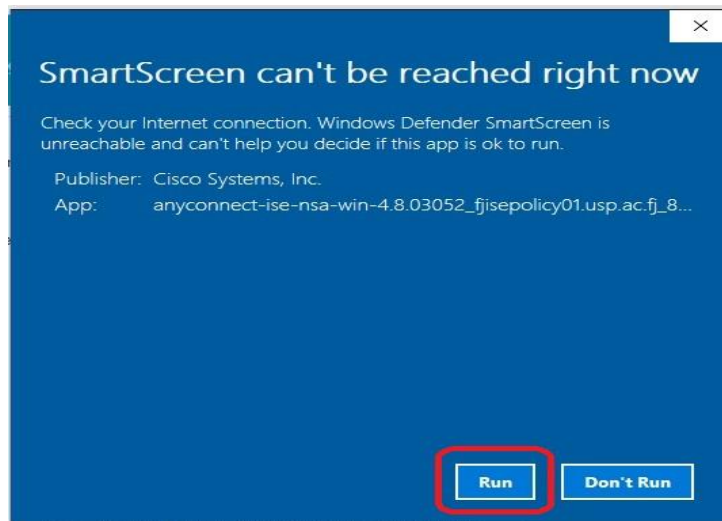
Accept the download by clicking on **“Save File”**



Double click on the downloaded file to open.



Click on **“Run”** to install application



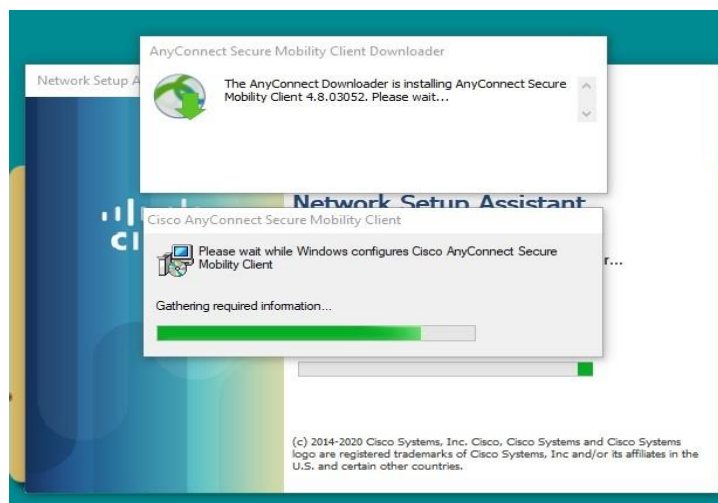
Once installed, application will run automatically.

Click on “**Connect**” when prompted too



The application will start installing.

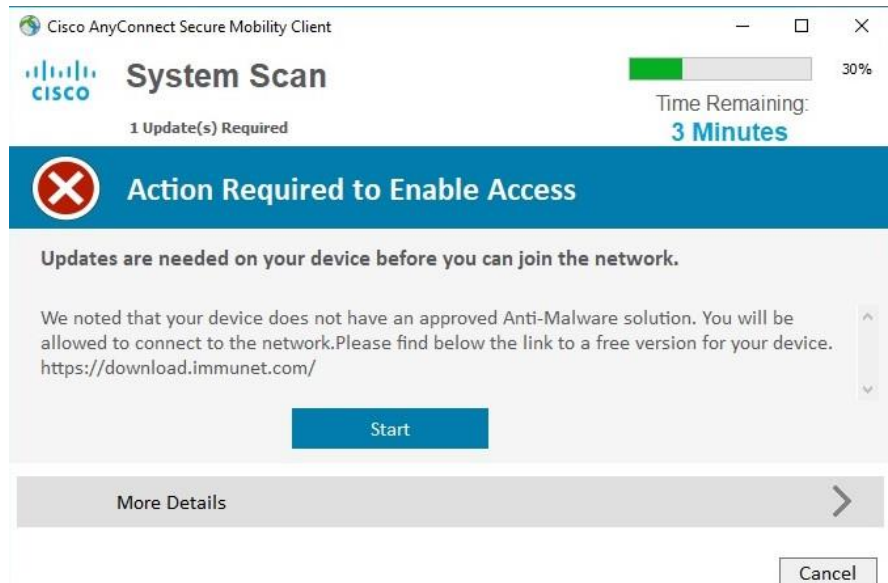
Please wait till the end of installation to continue to the next step.



The “**AnyConnect**” app will start scanning your device immediately after installation. The scan will approximately take 5mins.

Non-Compliant devices will receive a similar notification like the one on the right

If scan indicates that your device is **Not Compliant**, please visit your nearest IT Helpdesk.

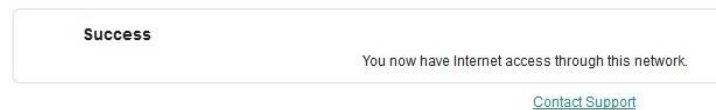


- Once scan is completed and your device is compliant, you will get this message

**Please ignore VPN option



Webpage will change to **“Success”**



Your device has now completed and passed the compliance check. You should be able to connect to USP WiFi services.