

Installing ArcGIS Desktop at USP¹

Step 1 – acquire the installation software package

- Connect to the USP network
- Open a web browser and navigate to:
<http://www.usp.ac.fj/index.php?id=14214>

Standard

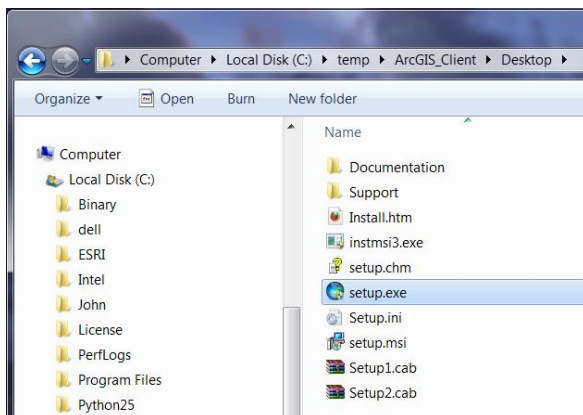
| | |
|---|--|
| Remote Support <ol style="list-style-type: none">1. Helpdesk Remote Utility Utilities <ol style="list-style-type: none">1. Acrobat Reader 112. CC Cleaner 3273. Direct X4. Java JRE8v40 (32 Bit)5. Java JRE8v40 (64 Bit)6. Putty7. Real Player8. Revo Uninstaller9. iTunes 10 (32 Bit)10. iTunes 10 (64 Bit) | Mail Clients Conversion <ol style="list-style-type: none">1. Pegasus Mail Converter2. InCredimail Converter3. Eudora Student Labs Only <ol style="list-style-type: none">1. Dell Optiplex 755 Bios2. Dell Optiplex 760 Bios3. Dell Optiplex 380 Bios ArcGIS Software <ul style="list-style-type: none">• ArcGIS Desktop v10.2.2 |
|---|--|

- Download the installation file (called ArcGIS_client.rar) from the ArcGIS Desktop v10.2.2 link
- Extract the archive to a temporary folder on your computer. You will need WinRAR to extract the archive (go to www.winrar.com for the winrar extraction software).

Step 2 – install the ArcGIS Desktop application

First, make sure you are connected to the USP network

- Run **setup.exe** from the Desktop folder (in the example below the ArcGIS_Client folder has been extracted under the temp folder)



¹ Note if you have a previous version of ArcGIS installed on your computer (e.g. ArcGIS 10.0) you will need to completely uninstall the previous version before installing ArcGIS 10.2.2.

Updated 25 March, 2015

- When running the setup, select the option to do a **Complete installation**
- Accept the **defaults** for the rest of the settings

Step 3 – Set the license manager

- Make sure your computer is connected to the USP network WITH an Ethernet Cable (NOT Wireless)
- Start the ArcGIS Administrator
 - (All Programs > ArcGIS > ArcGIS Administrator)
- Select the product as ArcInfo (Concurrent Use)
- Set the License manager to 7788@144.120.144.160
- Click on OK

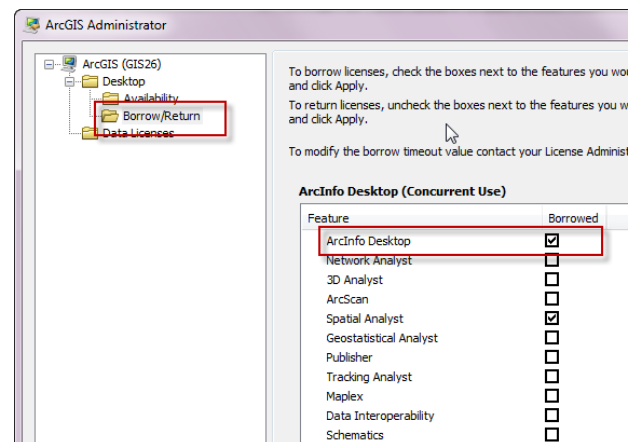
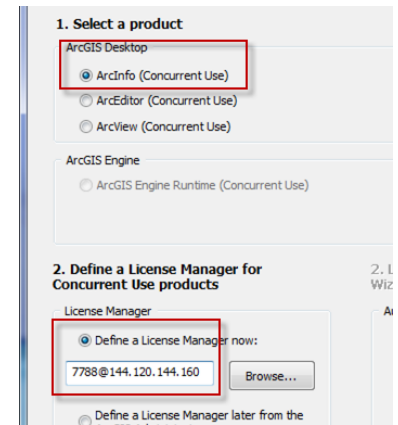
You should now be able to run ArcGIS Desktop while connected to the USP network.

Using ArcGIS Desktop when NOT connected to the USP network

ArcGIS Desktop can be run when disconnected the USP network. To do this, you need to **borrow a license** from the license manager.

Borrowing a license

- Connect to the USP Network (NOT Wireless)
- Start the ArcGIS Administrator (Start > Programs > ArcGIS > ArcGIS Administrator)
- Navigate to Desktop > Borrow/Return
- Select the licenses you need. You **must** click on the **first license** item. Other extensions are optional.
- Click on OK and close the license administrator
- Disconnect from USP network and start ArcGIS Desktop
- The borrowed license will expire after 14 days. After that you need to re-connect to the USP network and borrow again



IMPORTANT – Running ArcGIS Desktop when connected to another network

If you are connected to another network i.e. NOT the USP network, you will not be able to start ArcGIS Desktop (it will recognize that it is connected to a network and will look for the USP license manager, which cannot be seen from other non-USP networks).

If you want to run ArcGIS Desktop when connected to another network;

- Disconnect from your network (physically; pull the cable out or turn off the wireless)
- Start ArcGIS Desktop (it will start with the borrowed license)
- Once ArcGIS Desktop has started, reconnect your other network